



Penthouse, 24 Buckingham Gate, Westminster SW1E

NAPIER WATT

T: 0207 935 0011

E: enquiries@napierwatt.co.uk

W: napierwatt.co.uk

Asking Price £4,000,000, Leasehold

35 Berkeley Square, Mayfair, London, W1J 5BF



Description

A stunning Penthouse Apartment, adjacent to Buckingham Palace and with stunning views, directly over St James Park and Birdcage Walk. The apartment occupies the entire two top floors (7th and 8th) with lift, high ceilings, AC, day porter, substantial terrace and additional balcony.

Buckingham Gate's central location puts it at the heart of the capital with St James's Park station, just five minutes walk away, offers access to the extensive tube network and offers easy access to Victoria station and the Gatwick express.

Entrance Hall : High Ceiled Double Reception Room : Fitted Kitchen : Guest WC : Three Double Bedroom Suites, : Utility Room : Roof Terrace : Balcony : EPC C

Key Features

- FOR SALE AS AN INVESTMENT
- EXCEPTIONAL VIEWS
- PASSENGER LIFT
- PENTHOUSE APARTMENT
- ROOF TERRACES
- GOOD CONDITION
- LEASEHOLD 992 YEARS

Terms

Leasehold : 992 years [999 years from 25 November 2015]

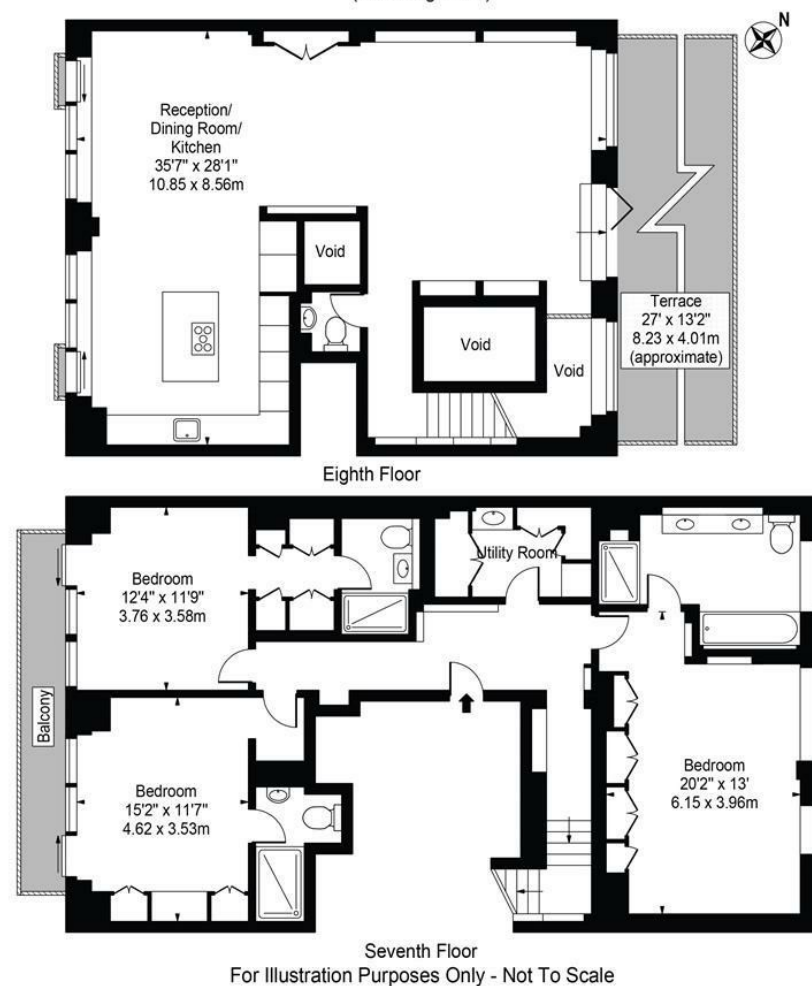
Service Charge : Half Yearly On Account Reserve Charges £751.87

Half Yearly Service Charge in Advance £8,873.06

Council Tax : Band H Westminster

Buckingham Gate

Approx. Gross Internal Area 1924 Sq Ft - 178.75 Sq M
(Excluding Voids)



This floor plan should be used as a general outline for guidance only and does not constitute in whole or in part an offer or contract. Any intending purchaser or lessee should satisfy themselves by inspection, searches, enquiries and full survey as to the correctness of each statement. Any areas, measurements or distances quoted are approximate and should not be used to value a property or be the basis of any sale or let.

IMPORTANT: We would inform prospective purchasers that these sales particulars have been prepared as a general guide only. A detailed survey has not been carried out, nor the services, appliances and fittings tested. Room sizes should not be relied upon for furnishing purposes and are approximate. If floor plans are included, they are for guidance only and illustration purposes only and may not be to scale. If there are any important matters likely to affect your decision to buy, please contact us before viewing the property.